

# ENTRY LEVEL MANUAL SCREEN PRINTERS

# V-1000



\$2,307\*

V1-46  
4 table, 6 color shown  
Standard size 15" x 17"  
(38 x 43 cm) steel pallets  
(Shown with optional service pan and wheels)

## Micro-registration

The V-1000 upgradeable manual screen press is designed and priced to meet the needs of the entry level screen printer.

The V-1000 press uses the industry's most unique floating head design which minimizes cost. Accurate registration is achieved without the higher price associated with machines of this capacity.

The V-1000 tabletop press starts at \$615.00\* and is available from 1 table, 1 color up to 1 table, 6 color. The rotary floor press starts at \$910.00\* and is available from 1 table, 1 color up to 4 table, 6 color.

The tabletop unit can be mounted to a utility cart. Vastex also makes the V-2000 heavy duty press.

## Options

- Utility cart for storage and mobility
- HD Head upgrade
- VRS Pin Registration
- Service pan and wheels
- Youth, oversized\*\*, sleeve, hat, pocket, and polo shirt pallets

*Increase the Power of your V-1000!!*  
HD Head upgrade now available for all V-1000's. With this upgrade you can use larger screens and pallets, and **The DiGiT** numbering attachment! **Add \$75/color.**



## V-1000 Press

VALUE	Quality at an entry level price
LONG LASTING	Steel Pallets w/ rubber tops - interchangeable with the V-2000**
ACCURATE	Micro-registration
PRECISE	Holds accurate multicolor printing registration
INNOVATIVE	Floating Head, 3 point bearing lock allows multiple heads down
ADJUSTABLE	6 way head leveling adjustment
VERSATILE	Available up to 4 table, 6 color (4x6)
CAPACITY	Holds up to 21" x 28" (51 x 61 cm) screens
GUARANTEED	1 year warranty on manufacturer's defects
SHIPS UPS	Can even ship UPS in multiple boxes
EXPANDABLE	From 1 table, 1 color (1x1) to 4 table, 6 color (4x6)

\$1,514\*

\$1,065\*  
(V1-T14 without utility cart)



V1-T14  
+  
UC-1000  
1 table, 4 color  
Standard size  
15" x 17"  
(38 x 43 cm)  
steel pallets  
shown mounted on  
optional utility cart

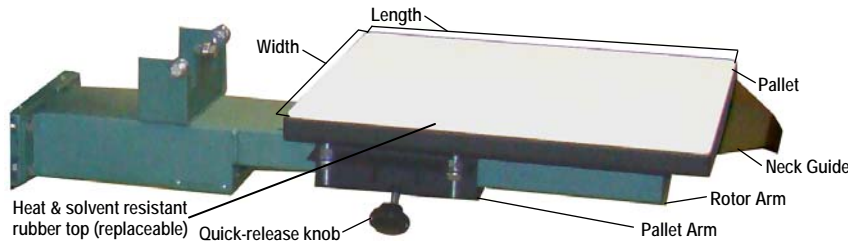
\*Starting List Price (USD). 6% sales tax will be added for PA billing addresses. Prices subject to change without notice.

\*\*The largest pallet available is the oversized 17" x 21" (43 x 53 cm).



# Vastex, quality made in the U.S.A. since 1960

## V-1000 Pallets and Accessories



Never warp, high strength steel construction  
 Heat & solvent resistant rubber top (replaceable)  
 Neck guide to aid in garment positioning  
 4-bolt adjustable, pallet arm (included w/ pallet)  
 Elevated pallet for easy loading  
 25 Year Non-warping Pallet Warranty

### Shirt Pallets

- 13" x 11.5" (33 x 29 cm)
- 14" x 14" (36 x 36 cm)
- 15" x 17" (38 x 43 cm) Standard
- 10.5" x 17" (27 x 43 cm) Junior
- 17" x 21" (43 x 53 cm) Oversized



### Single Long Sleeve Pallets

- 4" x 19" (10 x 48 cm)
- 6" x 19" (15 x 48 cm)



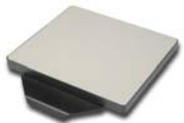
### Short Sleeve Pallets

- 3" x 9" (8 x 23 cm)
- 4" x 9" (10 x 23 cm)
- 5" x 9" (13 x 23 cm)



### Mini Pallets

- 6" x 6" (15 x 15 cm)
- 9" x 8" (23 x 20 cm)



### Short Leg Pallet

- 6" x 9" (15 x 23 cm)



### Clamp on Pallet Adapters

- 6.5" x 5" (17 x 13 cm) Polo Attachment
- 3.875" x 4" (9.8 x 10 cm) Pocket Attachment
- 3" x 5" (8 x 13 cm) Above Pocket Attachment



### Umbrella Pallet

- 7.25" x 16.375" x 11" (18.4 x 41.6 x 27.9 cm)



### Hat Pallets

- VP-H1**  
5.125" x 3" (13 x 8 cm)
- VP-H2**  
4.875" x 3" (12 x 8 cm)
- VP-H3**  
3.563" x 2.5" (9 x 6 cm)



### Hat Printing Attachment

Attachment contains:

- (1) Hat pallet (3 sizes to choose from)
- (1) Screen arm extension
- (1) 3.5" (9 cm) squeegee
- (1) Hat screen [9" x 12" (23 x 30 cm) w/ 110 mesh]
- (1) Hat pallet arm attachment w/ spring loaded hold down

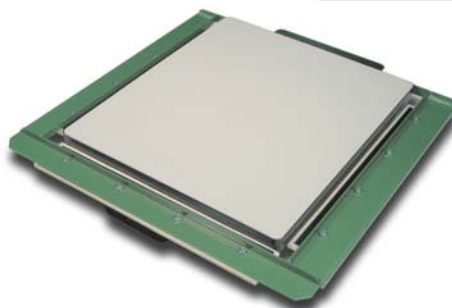


### Jacket Hold Downs

The Quick-Stretch is for printing lined garments like jackets, or delicate fabrics where spray adhesive can't be used. Fits around existing pallet.

Available for Many Pallet Sizes, PLUS Sleeve & Custom Sizes

Works with:  
 6" x 6" (15 x 15 cm)  
 4" x 17" (10 x 43 cm)  
 9" x 8" (23 x 20 cm)  
 10.5" x 17" (27 x 43 cm)  
 15" x 17" (38 x 43 cm)  
 17" x 21" (43 x 53 cm)



### V-1000 Technical Specifications

Maximum Screen Size	21" wide x 28" long (53 x 71 cm)	
Maximum Pallet Size	17" wide x 21" long (43 x 53 cm)	
Overall Size 1 table 4 color (1x4), tabletop unit [w/ 20" x 24" (51 x 61cm) screen]	34" x 62" x 29" tall (86 x 157 x 74 cm)	
Overall Size 4 table 4 color (4x4), rotary floor unit [w/ 20" x 24" (51 x 61cm) screen]	81" diameter x 58" tall (206 x 147 cm)	
Overall Size 4 table 6 color (4x6) rotary floor unit [w/ 20" x 24" (51 x 61cm) screen]	92" diameter x 58" tall (234 x 147 cm)	
Shipping	Box Size	Weight
Print Head	13" x 13" x 7" (33 x 33 x 18 cm)	11 lbs (5 kg)
Rotor Arm	37" x 11" x 7" (94 x 28 x 18 cm)	14 lbs (6.4 kg)
Two Rotor Arms (packed together)	37" x 11" x 14" (94 x 28 x 36 cm)	28 lbs (12.7 kg)
Standard Size Pallet with Pallet Arm	24" x 19" x 7" (61 x 48 x 18 cm)	20 lbs (9 kg)
Two Standard Size Pallets with Pallet Arms	24" x 19" x 14" (61 x 48 x 36 cm)	40 lbs (18 kg)
Legs, floor model	37" x 9" x 9" (94 x 23 x 23 cm)	40 lbs (18 kg)
Center Hub Assembly 4 table 6 color (4x6)	24" x 24" x 16" (61 x 61 x 41 cm)	87 lbs (39.5 kg)
Center Hub Assembly 4 table 4 color (4x4)	16" x 16" x 16" (41 x 41 x 41 cm)	61 lbs (27.7 kg)
Tabletop Press (must add print heads & pallet)	49" x 13" x 13" (124 x 33 x 33 cm)	38 lbs (17.2 kg)

All shipping weights and dimensions are for continental US shipping only. Call for other shipping specifications. Ex-works from Allentown PA. Although all V-1000 press sub assemblies are packed into individual boxes, which can be shipped via small package carrier like, UPS, Fed-X, DHL, it may be more economical to use a "freight company (common carrier) depending on your area.

\*If shipping by a common carrier there will be a \$25.00 skid charge and you must add 40 lbs. for the skid.

Example: A V-1-44 is a V-1000 4 table 4 color floor unit press. It will ship in the following boxes:

- (1) Center hub assembly 4x4, (1) Legs, floor model, (2) Two rotor arms, (2) Two pallets with pallet arms, and (4) Print heads.

- How to order V-1000 press:
- 1- Choose tabletop or floor unit. (Tabletop is 4 color maximum.) (Floor model is 4 color or 6 color maximum.)
  - 2- Choose number of tables/stations, 1 on tabletop 1-4 on floor unit
  - 3- Choose number of colors, 1-4 on tabletop 1-6 on floor unit

#### Model # nomenclature

V1-X1X1X1  
 1 to 4 (tabletop) or 1 to 6 (rotary floor unit) = # of Colors  
 1 (tabletop, non rotary) or 1 to 4 (floor unit, rotary) = # of Tables  
 T = Tabletop (non rotary, one table, up to 4 colors)  
 Blank = Floor Model (rotary, 1 to 4 tables, up to 6 colors)  
 V1 = V-1000 Series entry level manual screen press



Toll Free: 1.800.482.7839  
 1.800.4VASTEX

V-1000\_0510

# PALLETS & ACCESSORIES

Vastex, quality made in the U.S.A. since 1960



**WS-VHD:** Heavy Duty "Drop-Down" wheels for all V-2000 presses. Only raises press 3/4" off the floor.



**VSP-WS:** Service Pan and Wheel Set for any V-2000HD Press



**V1SP-WS:** Service Pan and Wheel Set for any V-1000 Press

## All Over Pallet, up to XL shirts (V2P-AOP-XL)



All over pallet is available separately to mount to your V-2000 press, or mounted on a standalone 1 station press! (Shown on right)



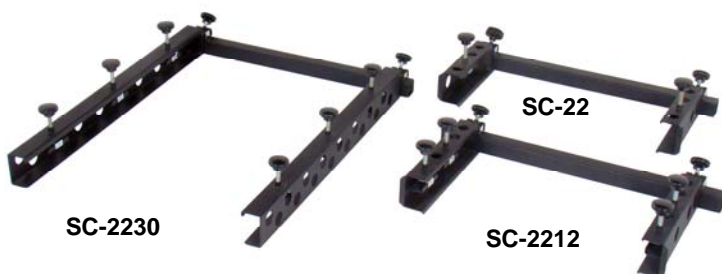
## Vacuum Pallet (VP-VT-1824-NA)



The Vacuum Pallet is available in a self powered version, in 120V or 240V. The Vacuum Pallet can also be ordered without a blower attached, and uses a customer supplied shop vac. (Shown on right)



## Side Clamps



## Hat Printing Attachment\*

Available with different cap pallets



Hat Package fits V-2000 (V2C-CPB) or V-1000(V1C-CPB) 3 different style Plattens to choose from!

\*All starting list prices (USD) do NOT include crating and shipping. 6% sales tax will be added for PA billing addresses. Prices subject to change without notice.



# PALLETS & ACCESSORIES

Vastex, quality made in the U.S.A. since 1960

## Standard Shirt Platens



Custom Sizes Available

- 10.5" x 17"
- 15" x 17"
- 24" x 48"
- 12" x 20"
- 16" x 20"
- 26" x 20"
- 12" x 30"
- 16" x 24"
- 27" x 32"
- 13" x 8.5"
- 17" x 21"
- 48" x 40"
- 13" x 11.5"
- 18" x 30"
- 13.5" x 11.5"
- 20" x 24"
- 13.5" x 17"
- 20" x 30"
- 14" x 14"
- 22" x 32"

## Mini Pallets



Quick Stretch Available!

- 6" x 6"
- 9" x 8"

## Long Sleeve and Leg Pallets



- 2.5" x 14"
- 5" x 24"
- 4" x 19"
- 6" x 24"
- 5" x 19"
- 2 5/8" x 26"
- 6" x 19"

## Double Long Sleeve Pallets



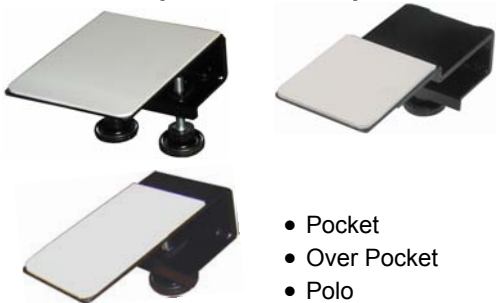
- 4" x 19"
- 5" x 19"

## Short Sleeve and Leg Pallets



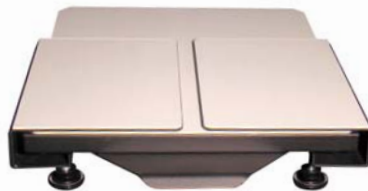
- 3" x 9"
- 5" x 9"
- 4" x 9"
- 6" x 9" (Short Leg)

## Clamp on Pallet Adapters



- Pocket
- Over Pocket
- Polo

## Zipper Attachments



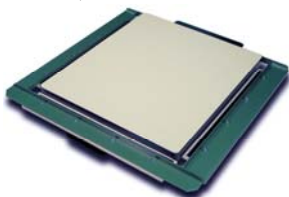
- 11" x 7.5"
- 16" x 7.5"

Sold in Pairs

## Umbrella Pallet w/ Quick stretch.

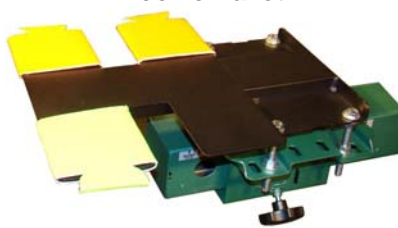


## Quick Stretch



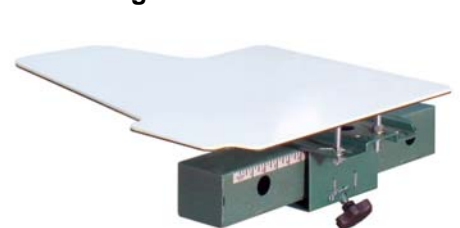
- 6" x 6"
- 15" x 17"
- 9" x 8"
- 17" x 21"
- 10.5" x 17"
- 4" x 17"

## Koozie Pallet



Print 4 Koozies at once!!

## Wing Pallet- One Sleeve



- 21"W x 18"L
- 21"W x 27"L

- Never warp, high strength steel construction
  - Quick release and side ruler for easy locating
  - Heat & solvent resistant rubber top (replaceable)
  - Neck guide to aid in garment positioning
  - 4-bolt adjustable, pallet arm (included w/ pallet)
  - Elevated pallet for easy loading
  - Adapters available for other brand presses.
- 25 Year Non-warping Pallet Warranty

Custom Pallets Available!

See V-1000 Price List for pallet and accessory limitations

Download our "Pallets and Accessories Specifications" book for sizes and additional products. [VASTEX.COM](http://VASTEX.COM)

