

PREMIUM MANUAL SCREEN PRINTERS V-2000HD

\$5,513*



V2HD-66

6 station, 6 color, rotary press
w/ Standard size 15" x 17"
(38 x 43 cm) steel pallets

\$5,673*

as shown w/ optional service pan & wheels
VSP-WS

**25 YEAR
WARRANTY****

Options

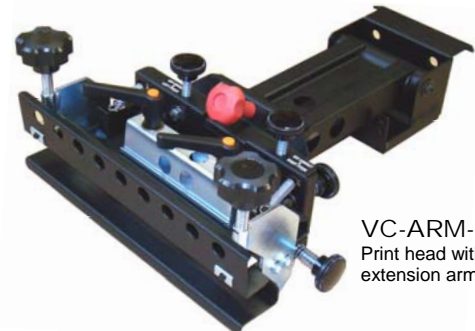
- Additional color and station up-grade packages
- Fast, numbering system attachment
- Super heavy duty print arms
- Pallets: leg, short leg, sleeve, short sleeve, mini, junior, oversized, jumbo, "all over", umbrella, vacuum pallet, custom sizes and so much more available
- Attachments: polo, pocket, above pocket, sweatshirt, cap, quick stretch (jacket hold down)
- Side clamps, removable or fixed
- Locking casters and levelers
- Service pan (for extra storage)

V-2000HD features

- | | |
|---------------|--|
| RELIABLE | 25 Year Warranty |
| HEAVY DUTY | <i>Never warp steel pallets</i> with rubber tops and the new <i>corner clamp pallet arm</i> |
| USER FRIENDLY | <i>Micro-registration</i> with wrench free controls & zero backlash |
| ADJUSTABLE | 6 way screen leveling |
| PRECISE | Holds accurate multicolor printing registration |
| ACCURATE | Embedded registration bearings (close to the screen, stays clear of spray tack) |
| FLEXIBLE | <i>Prints all heads down</i> |
| SMART | Gas lifters with 16 position variable lift strength |
| STRONG | 12" (30 cm) wide steel rear screen clamps joined by a steel clamp bar for off center clamping & 2.75" (6.9 cm) precision ground center shaft |
| DURABLE | 3" (7.6 cm) square steel rotor arm with ruler indicator |
| INNOVATIVE | Elevated Pallets—no need to stretch shirts over the arm (also compatible with quick stretch jacket attachment) |
| EXCLUSIVE | Zero backlash bearings on screen arm pivot |
| CONVENIENT | Adjustable micro clamp levers |
| EXPANDABLE | Upgrade at any time from 1 station 1 color tabletop to 10 station 10 color rotary floor press! |



V2P-1517
V2 Pallet arm with standard
15 x 17 pallet.
Shown mounted on rotor arm



VC-ARM-HD
Print head with
extension arm & hinge

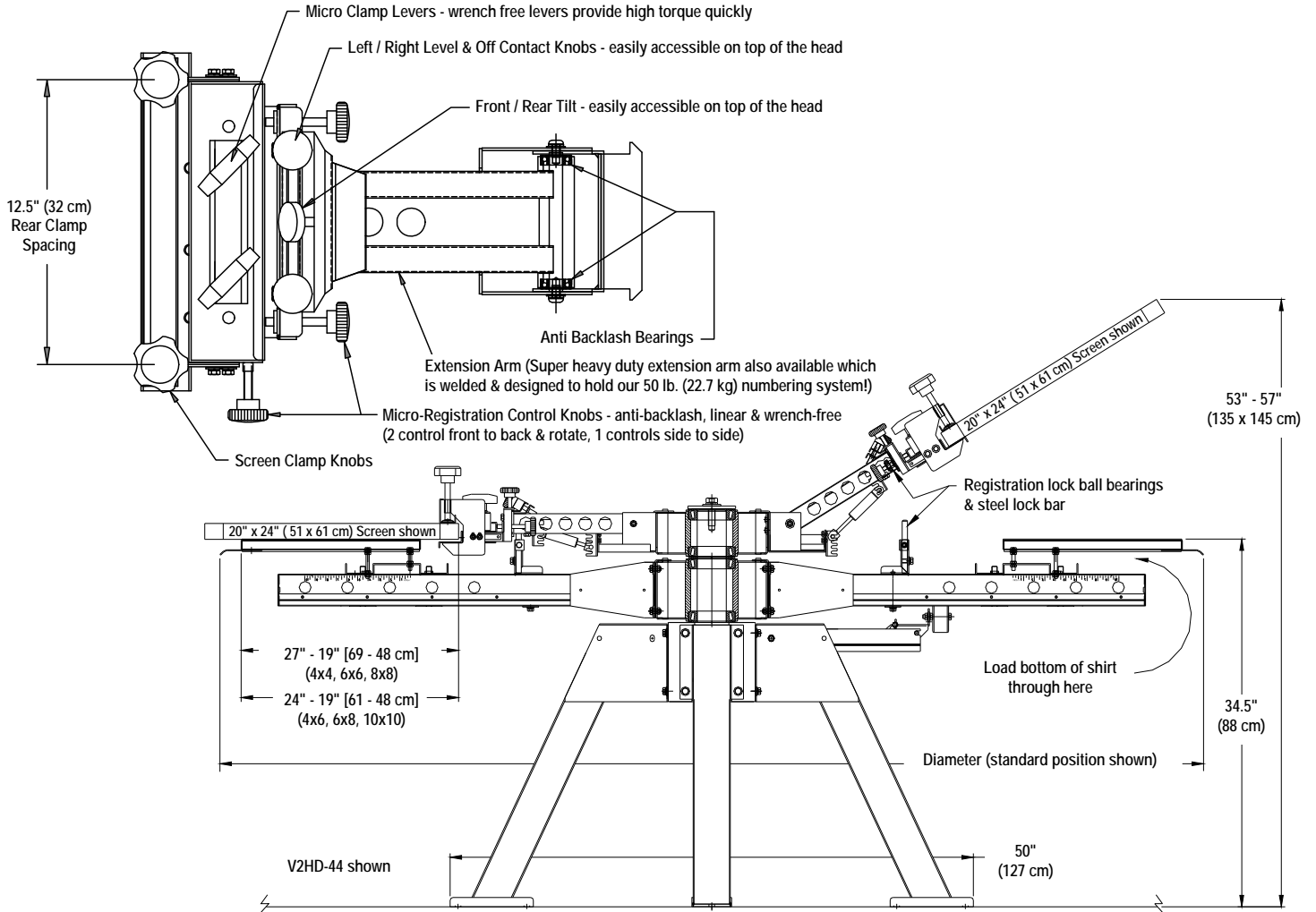
Tabletop models available.

*List Price (USD) for V-2000HD-66 press. Any shown price does **NOT** include crating and shipping charges. 6% sales tax will be added for PA billing addresses. Prices subject to change without notice.

**25 year limited warranty. Gas springs and rubber pallet tops covered for 3 years.



V-2000HD Series Manual Control Press Technical Specifications



	V2HD-44	V2HD-66	V2HD-88	V2HD-1010
Warranty*	25 Year	25 Year	25 Year	25 Year
Diameter - Standard	91" (231 cm)	99" (252 cm)	109" (277 cm)	131" (333 cm)
Diameter - Fully Extended	105" (267 cm)	111" (282 cm)	121" (307 cm)	137" (348 cm)
Maximum Screen Width	39" (99 cm)	27" (69 cm)	24" (61 cm)	25" (63.5 cm)
w/ optional side clamps	24" (61 cm)	24" (61 cm)	21" (53 cm)	21" (53 cm)
Maximum Screen Weight	8 lbs (3.6 kg)	8 lbs (3.6 kg)	8 lbs (3.6 kg)	8 lbs (3.6 kg)
w/ double gas springs	30 lbs (13.6 kg)	30 lbs (13.6 kg)	30 lbs (13.6 kg)	30 lbs (13.6 kg)
w/SHD arms & extra gas springs	50 lbs (22.7 kg)	50 lbs (22.7 kg)	50 lbs (22.7 kg)	50 lbs (22.7 kg)
Standard Pallet Size	15" x 17" (38 x 43 cm)	15" x 17" (38 x 43 cm)	15" x 17" (38 x 43 cm)	15" x 17" (38 x 43 cm)
Maximum Stock Pallet	27" x 32" (69 x 81 cm)	27" x 32" (69 x 81 cm)	27" x 32" (69 x 81 cm)	27" x 32" (69 x 81 cm)
Height: legs to pallet / w-wheels	34.5" (88 cm) / 38.5" (98 cm)	34.5" (88 cm) / 38.5" (98 cm)	34.5" (88 cm) / 38.5" (98 cm)	34.5" (88 cm) / 38.5" (98 cm)
Unit Weight	400 lbs (182 kg)	550 lbs (250 kg)	750 lbs (340 kg)	1,075 lbs (488 kg)
Shipping Weight**	685 lbs (311 kg)	800 lbs (363 kg)	1,025 lbs (465 kg)	1,423 lbs (646 kg)
Shipping Dimensions**	48" x 48" x 49" (122 x 122 x 125cm)	48" x 48" x 49" (122 x 122 x 125cm)	69" x 48" x 60" (175 x 122 x 153cm)	69" x 69" x 60" (175 x 175 x 153cm)
Fits Thru Doorway	Yes - 30" (76 cm)	Yes - 33" (84 cm)	Yes - 33" (84 cm)	No - Requires a dock door
Expandable	To 6, 8 or 10 station / color	To 8 or 10 station / color	To 10 station / color	No - Maximum

*25 year limited warranty. Gas springs and rubber pallet tops covered for 3 years.

**All shipping weights and dimensions are for continental US shipping only. Call for other shipping specifications. Ex-works from Allentown PA.

Shipping weights are approximate and may vary at time of shipping.



Toll Free: 1.800.482.7839
1.800.4VASTEX

V-2000HD_0211

PALLETS & ACCESSORIES

Vastex, quality made in the U.S.A. since 1960



WS-VHD: Heavy Duty "Drop-Down" wheels for all V-2000 presses. Only raises press 3/4" off the floor.



VSP-WS: Service Pan and Wheel Set for any V-2000HD Press



V1SP-WS: Service Pan and Wheel Set for any V-1000 Press

All Over Pallet, up to XL shirts (V2P-AOP-XL)

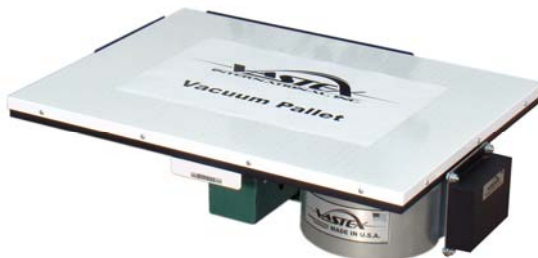


All over pallet is available separately to mount to your V-2000 press, or mounted on a standalone 1 station press! (Shown on right)



V2HDFP-11-AOP

Vacuum Pallet (VP-VT-1824-NA)

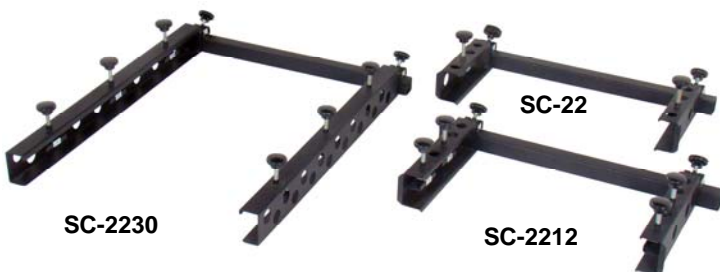


The Vacuum Pallet is available in a self powered version, in 120V or 240V. The Vacuum Pallet can also be ordered without a blower attached, and uses a customer supplied shop vac. (Shown on right)



V2HDFP-14: Shown with VAC-1824 Unpowered Vacuum Table

Side Clamps



SC-2230

SC-22

SC-2212

Hat Printing Attachment*

Available with different cap pallets



Hat Package fits V-2000 (V2C-CPB) or V-1000(V1C-CPB) 3 different style Plattens to choose from!

*All starting list prices (USD) do NOT include crating and shipping. 6% sales tax will be added for PA billing addresses. Prices subject to change without notice.



PALLETS & ACCESSORIES

Vastex, quality made in the U.S.A. since 1960

Standard Shirt Plattens



Custom Sizes Available

- 10.5" x 17"
- 12" x 20"
- 12" x 30"
- 13" x 8.5"
- 13" x 11.5"
- 13.5" x 11.5"
- 13.5" x 17"
- 14" x 14"
- 15" x 17"
- 16" x 20"
- 16" x 24"
- 17" x 21"
- 18" x 30"
- 20" x 24"
- 20" x 30"
- 22" x 32"
- 24" x 48"
- 26" x 20"
- 27" x 32"
- 48" x 40"

Mini Pallets



Quick Stretch Available!

- 6" x 6"
- 9" x 8"

Long Sleeve and Leg Pallets



- 2.5" x 14"
- 4" x 19"
- 5" x 19"
- 6" x 19"
- 5" x 24"
- 6" x 24"
- 2 5/8" x 26"

Double Long Sleeve Pallets



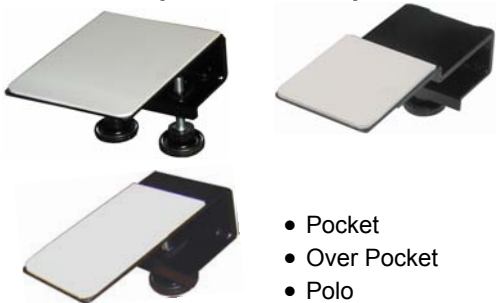
- 4" x 19"
- 5" x 19"

Short Sleeve and Leg Pallets



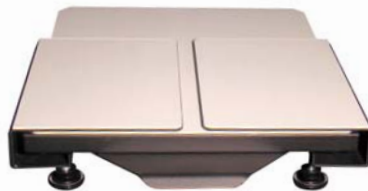
- 3" x 9"
- 4" x 9"
- 5" x 9"
- 6" x 9" (Short Leg)

Clamp on Pallet Adapters



- Pocket
- Over Pocket
- Polo

Zipper Attachments



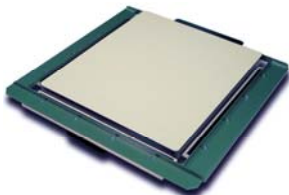
- 11" x 7.5"
- 16" x 7.5"

Sold in Pairs

Umbrella Pallet w/ Quick stretch.

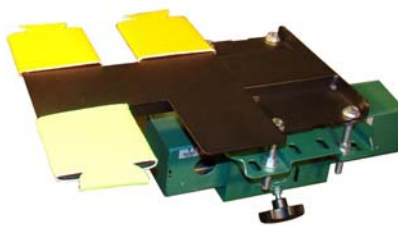


Quick Stretch



- 6" x 6"
- 9" x 8"
- 10.5" x 17"
- 15" x 17"
- 17" x 21"
- 4" x 17"

Koozie Pallet



Print 4 Koozies at once!!

Wing Pallet- One Sleeve



- 21"W x 18"L
- 21"W x 27"L

- Never warp, high strength steel construction
 - Quick release and side ruler for easy locating
 - Heat & solvent resistant rubber top (replaceable)
 - Neck guide to aid in garment positioning
 - 4-bolt adjustable, pallet arm (included w/ pallet)
 - Elevated pallet for easy loading
 - Adapters available for other brand presses.
- 25 Year Non-warping Pallet Warranty

Custom Pallets Available!

See V-1000 Price List for pallet and accessory limitations

Download our "Pallets and Accessories Specifications" book for sizes and additional products. VASTEX.COM

