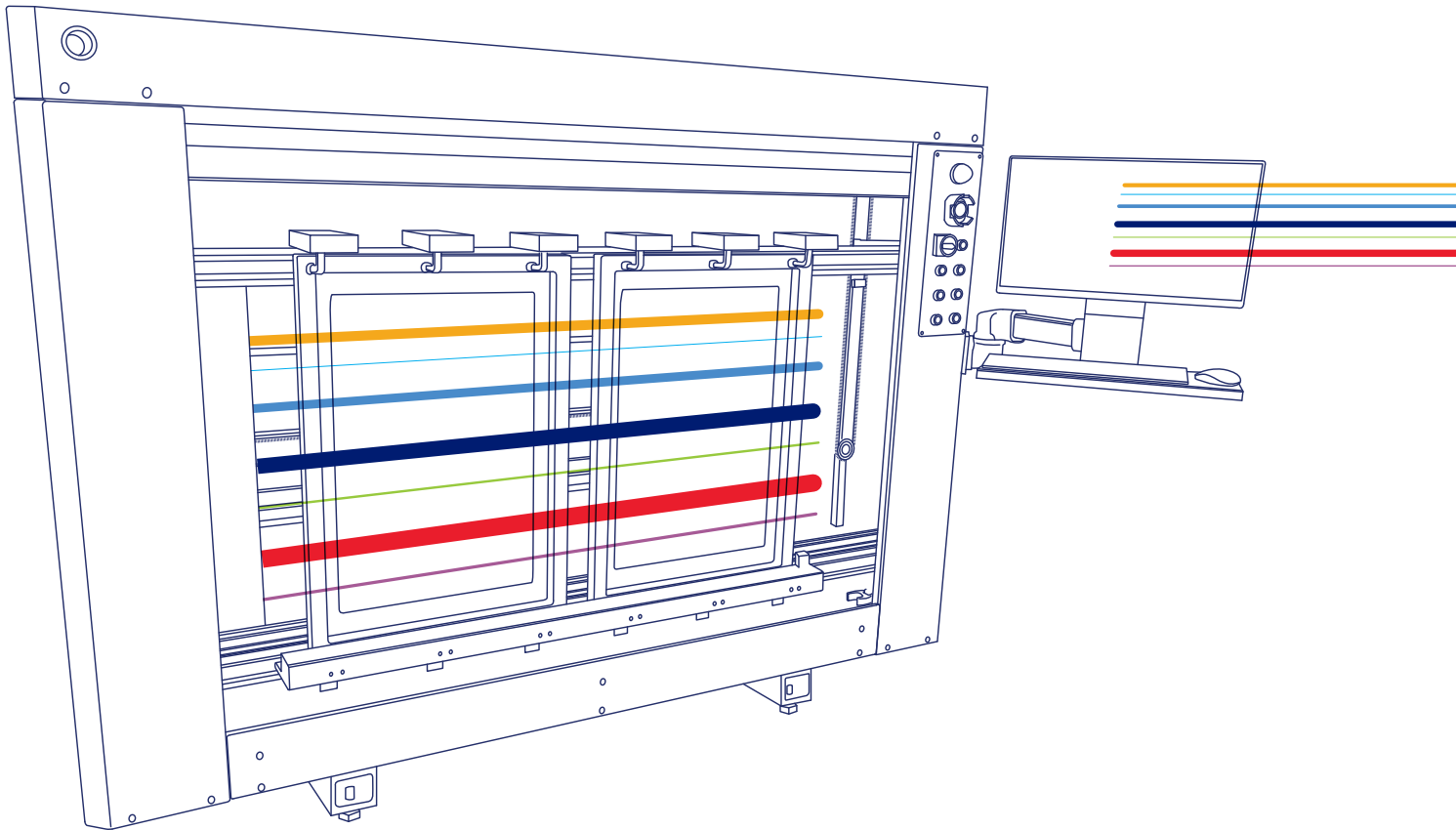


LTS 8012

The Advanced Direct Laser CtS Imaging & Exposure System

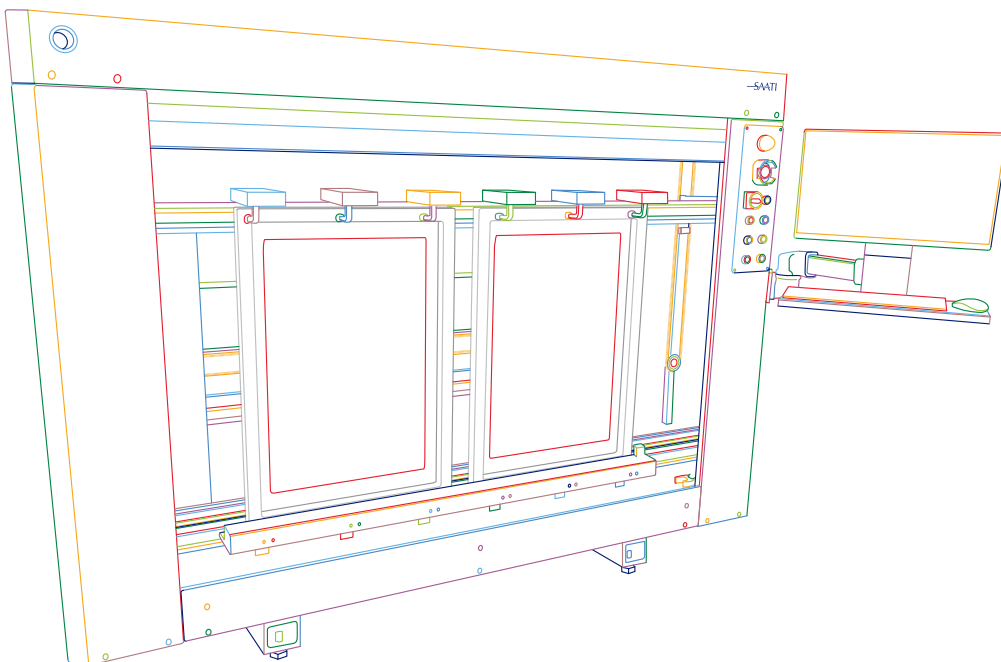




We cross-innovate

Table of Contents

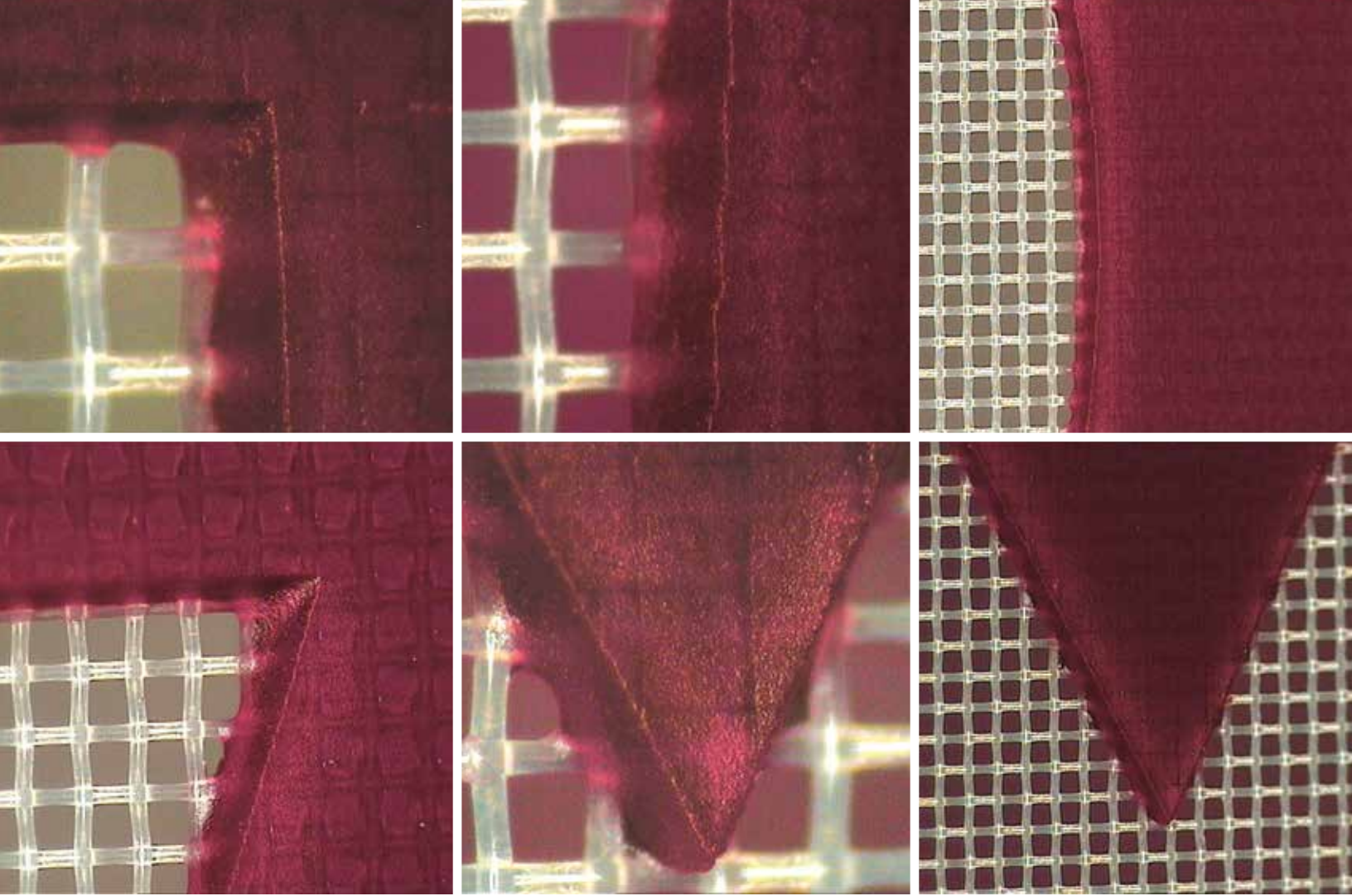
Introduction	02
Features	04
Physical Specifications	06
Laser Characteristics	08
Workflow Capabilities	10
Software Capabilities	14
Other LTS Models	16



The LTS Series: Introducing State-of-the-Art Laser Stencil Making by SAATI

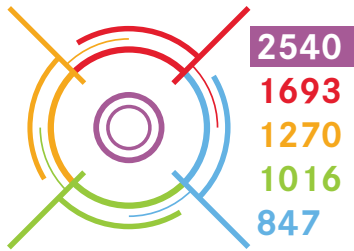
SAATI has decades of experience in manufacturing and commercializing precision woven mesh, emulsion, stencil films and chemicals. Knowledge we have gained from our customers has been compiled, analyzed and applied to produce a full range of screen making equipment; the jewel of this collection is the LTS Series.

The SAATI LTS range takes into account the contemporary needs of stencil makers with an eye toward future challenges that will demand more efficient and precise results. SAATI LTS machines are Direct Laser CtS (LTS) Image & Exposure units. They surpass the results of other CtS systems, and simultaneously provide enhancements to time and money spent producing stencils, as well as reducing your ecological footprint.



SAATI LTS 8012

Features



Precision Choices

Five DPI options let you choose the highest resolution or the shortest cycle



Long Life

Lasers have operational lives of 10,000+ hours at 100% strength



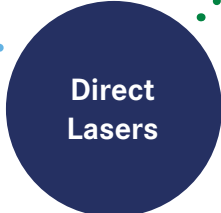
Simplified

Save time by eliminating film pinhole checks and registration. Image & Expose in one quick process

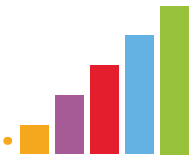


Flexibility

Compatible with all emulsion and film types



Direct Lasers



Power Settings

Quickly and thoroughly cure even very high EOM dual-cure emulsions



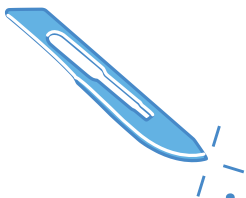


Digital Workflow



Faster Processing

Prepare art files, and create stencils immediately - no film creation or checks



Precision Imaging

CtS Inkjet liquid drops spread before drying - direct laser imaging has higher fidelity.



Digital Registration

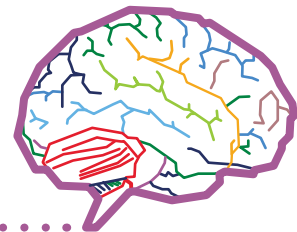
Eliminate difficulties by locking the frame into place and setting the laser start position digitally



Save Money

Stop paying for media to image your screens

No Consumables



Digital Archive

Keep an archive of art files, save registration settings and duplicate programs to improve your workflow



Spring Cleaning

Save space - eliminate storage for film and/or masking media



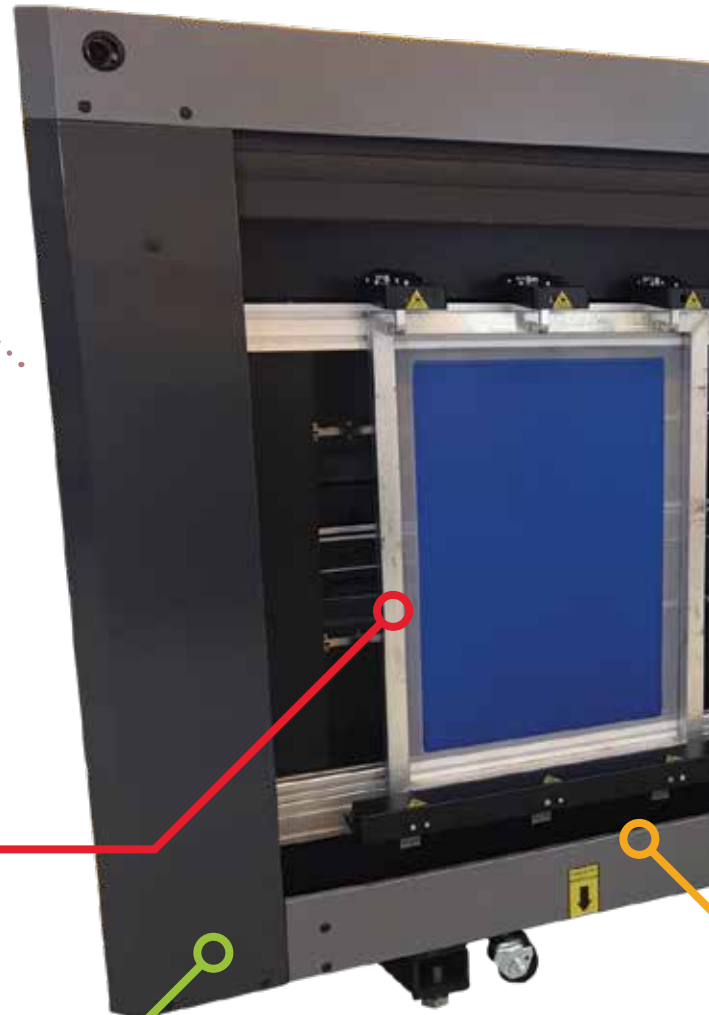
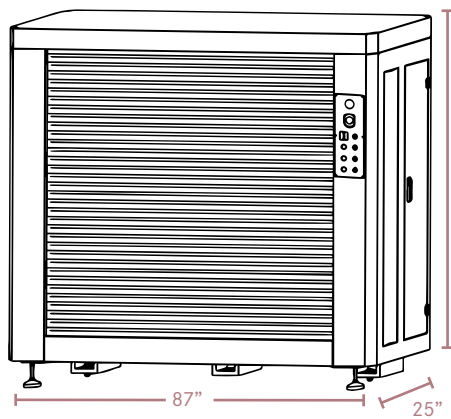
Environmental Impact

No masking material like ink or wax goes down the drain - Avoid the use of plastic film

SAATI LTS 8012

Physical Specifications & Characteristics

Dimensions



Characteristics

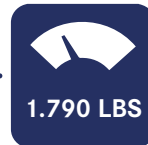
Glass-free vertical loading and frame lock system ensure accurate, easy screen placement and reduced pinholes

Solid metal construction provides a vibration free stencil making platform while maintaining a smaller footprint than other CtS machines

Easy to use pedals engage and disengage the frame clamps



Weight



Power



110V
standard

240V
with adapter



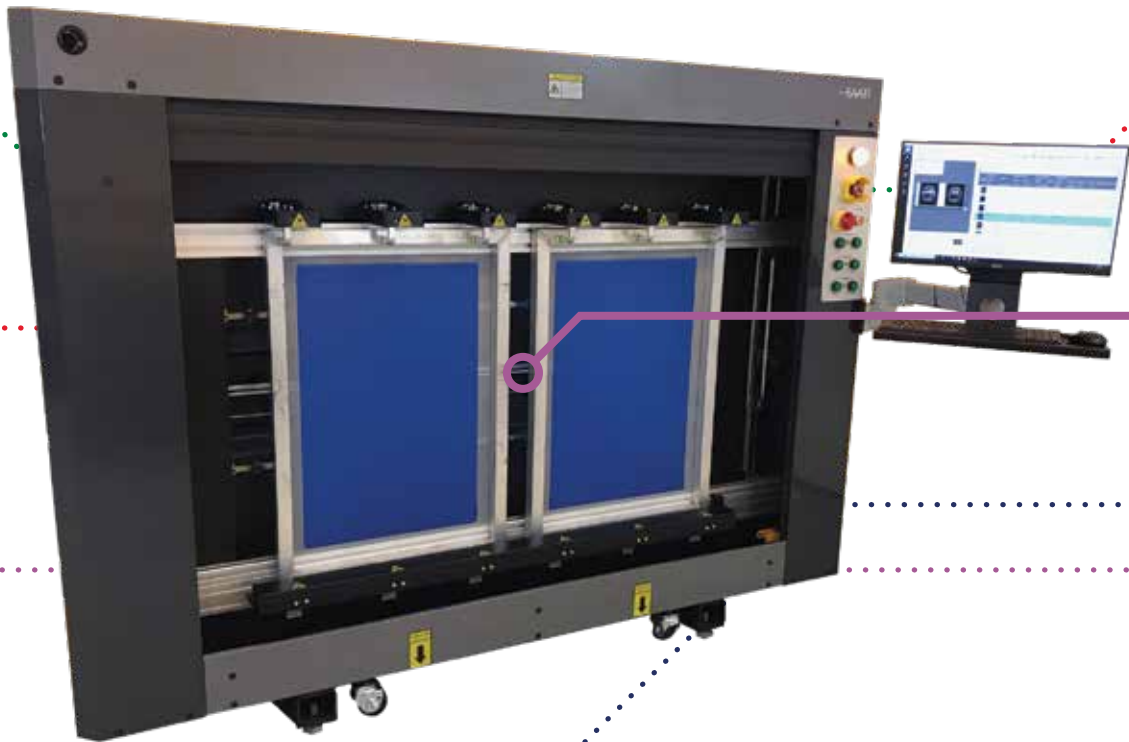
Touch screen workflow

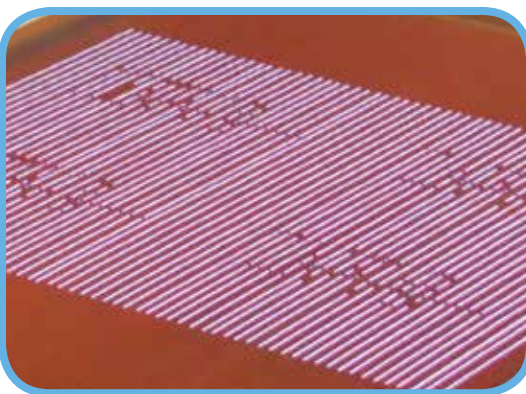
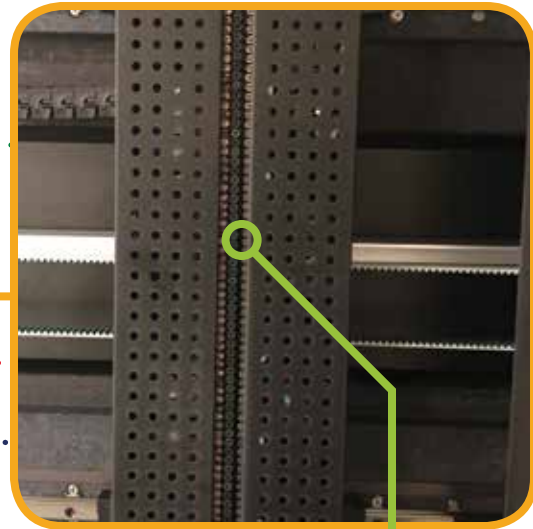
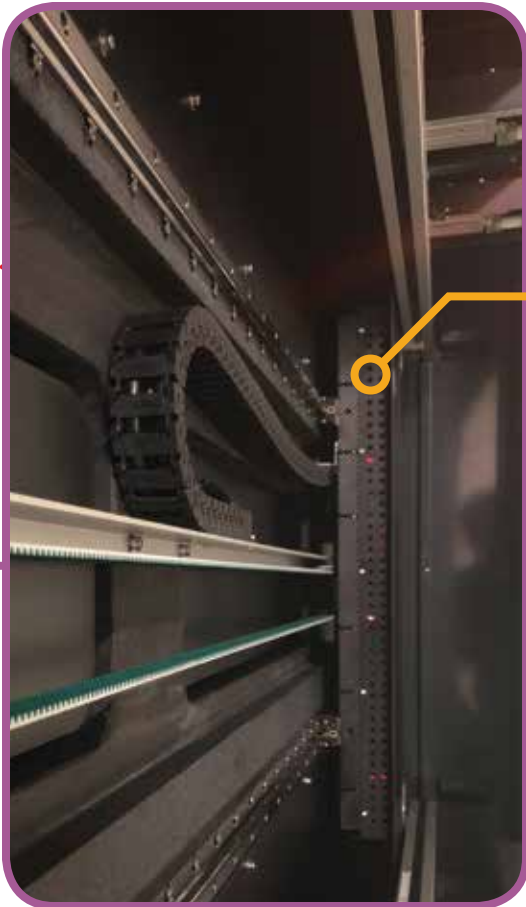
Motorized safety shutter

Large pneumatic frame holding area enables the simultaneous imaging and exposure of either 1 screen (up to 45x66") or 2 screens (up to 25x36" each)

SAATI LTS 8012

Laser Characteristics





- Linear array of 128 Blu-Ray Lasers on a belt-driven head, the system is durable and requires minimal maintenance
- The targeted light wavelength of the lasers maximizes curing speed and minimizes both power consumption and heat generation
- LED Lasers last 10,000+ hours with 100% efficiency

SAATI LTS 8012

Workflow Capabilities

Resolution Settings

The SAATI LTS has five resolution resolution settings, each tailored to a different types of image requirements

847

Low Setting

- Fastest processing times
- Superior to inkjet films

1016

- Superior to inkjet/waxjet resolution

1270

Middle Setting

- Equivalent to DLE systems

1693

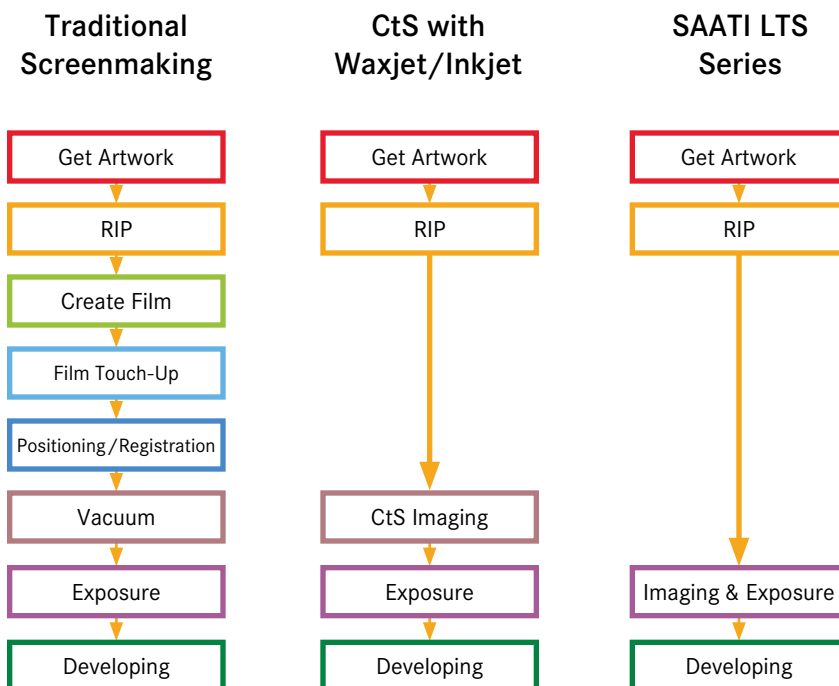
- Superior to many other DLE systems

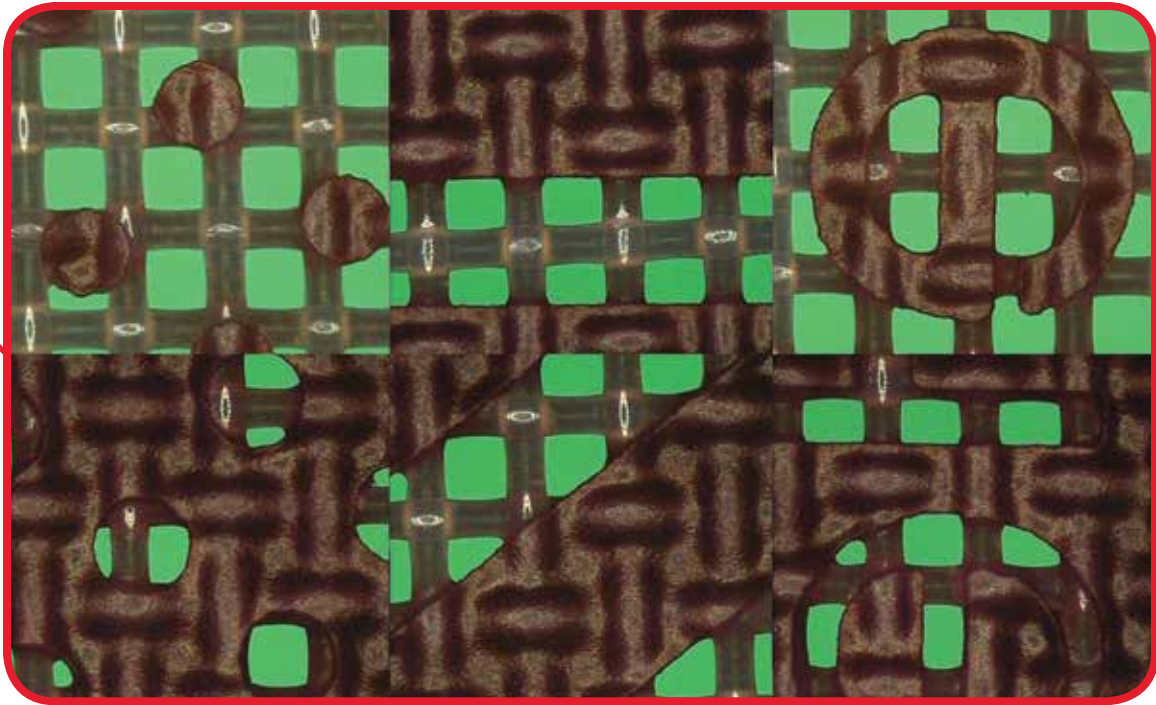
2540

Highest Setting

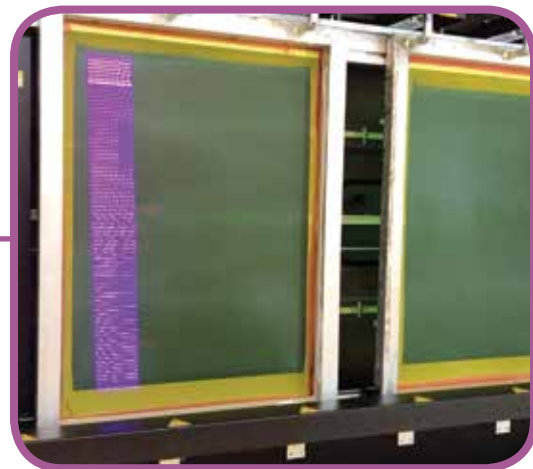
- Image setter quality for the most demanding applications

Improvements to Workflow



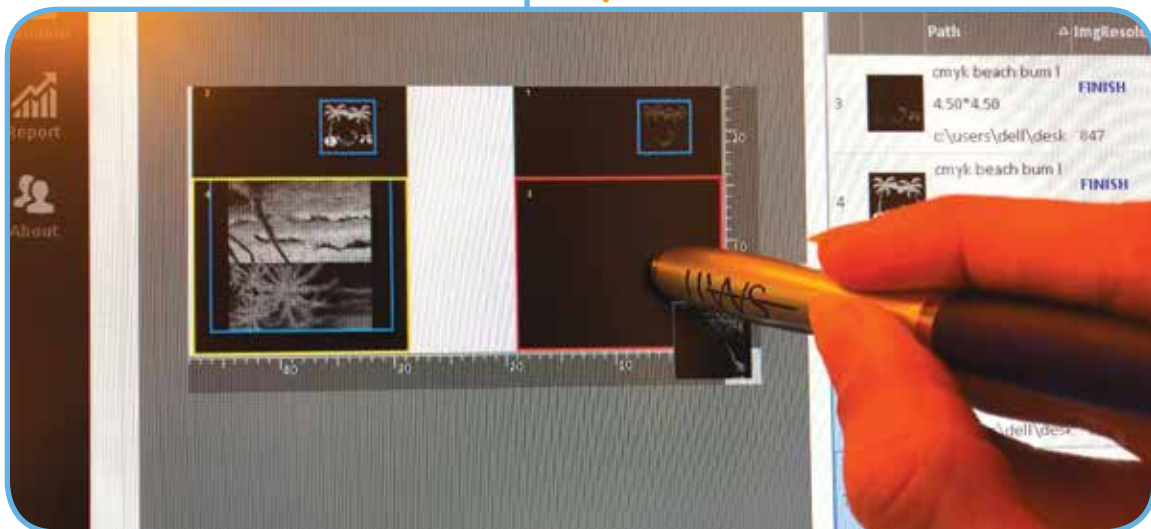
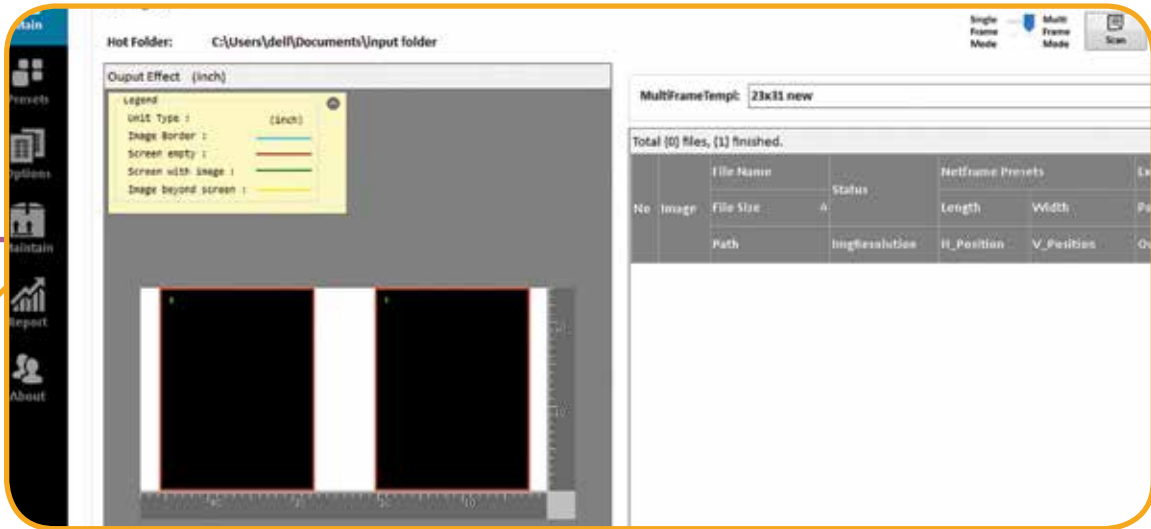


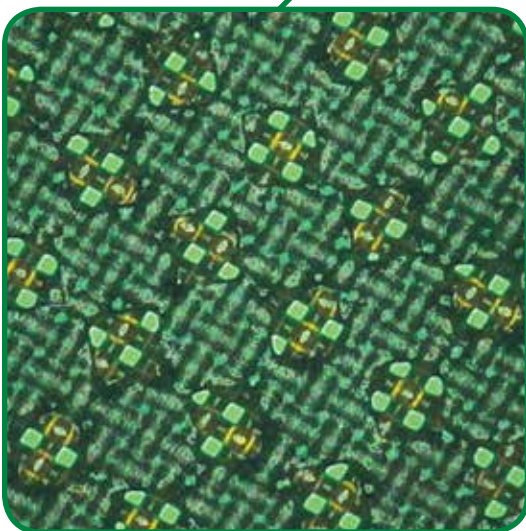
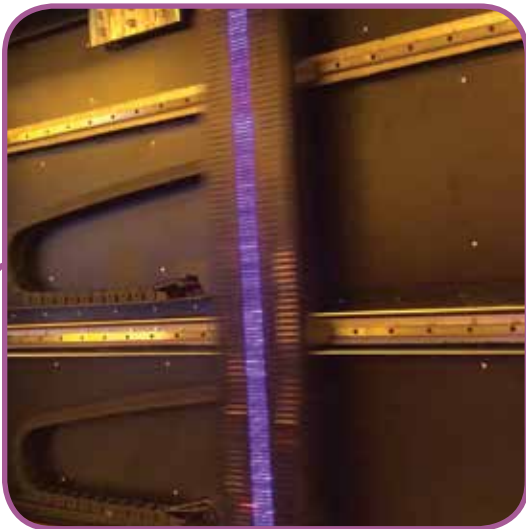
SAATI Mesh 110.80 coated with Textil PHU - 2,540 DPI setting



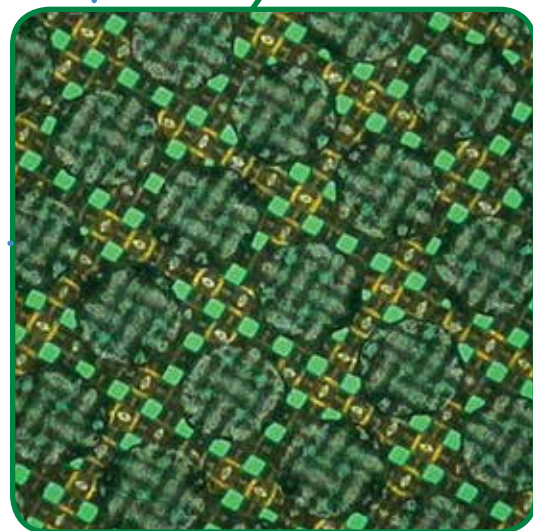
SAATI LTS 8012

Workflow Capabilities





120 LPI 40% dot on 380.31 YE



120 LPI 60% dot on 380.31 YE

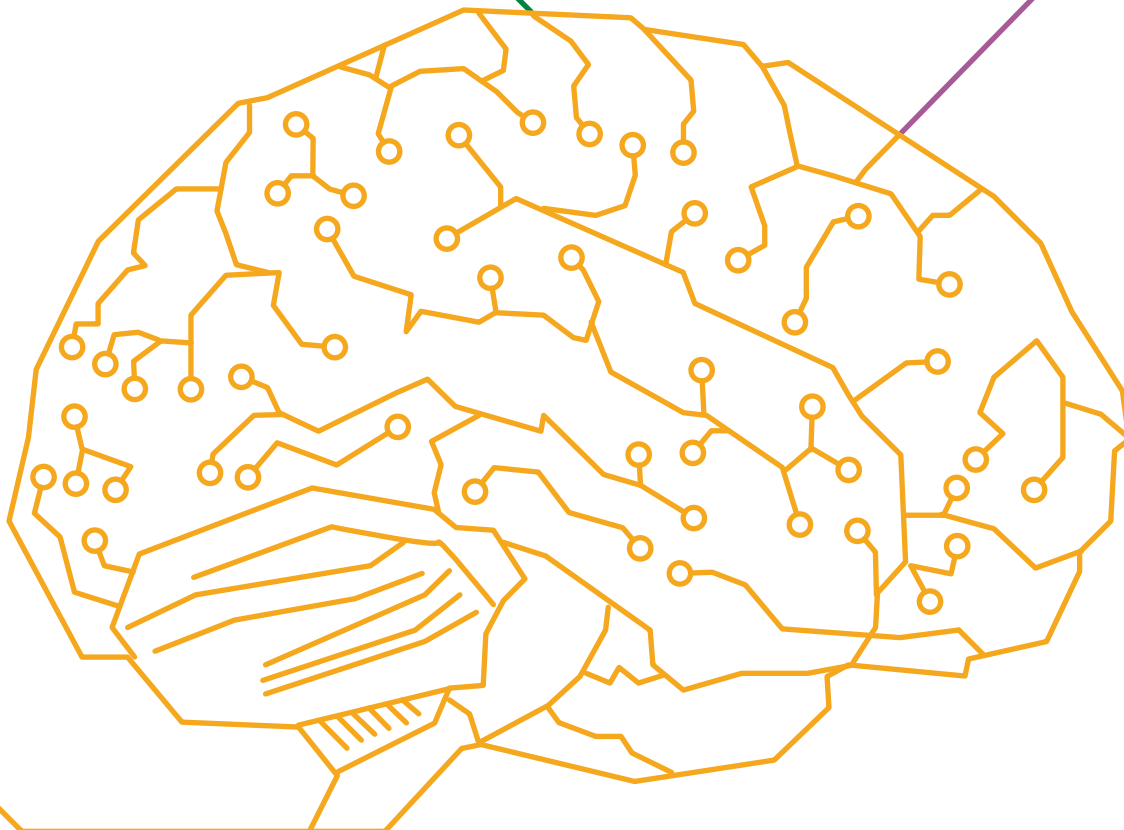
SAATI LTS 8012

Software Capabilities



User Friendly Layout System

- Set size & location of image(s) and define exposure area
- Place multiple stencil images across 1 or more screens with touchscreen or mouse
- Finalized layouts go to queue for easy work management





Exposure System

- Set the laser power and scan speed to effectively and thoroughly cure all emulsion and film types in under 3:00
- Customize settings and/or create standard templates for future use
- Proprietary file naming system automatically loads Netframe, Image Pattern & Exposure settings (not required)

Name	Power	Speed	Resolution	Scan Length	Exposure Time	Offset
Image_001	100	300	1270	762	1:00	0
Image_002	100	300	1270	762	1:00	0
Image_003	100	300	1270	762	1:00	0
Image_004	100	300	1270	762	1:00	0
Image_005	100	300	1270	762	1:00	0
Image_006	100	300	1270	762	1:00	0
Image_007	100	300	1270	762	1:00	0
Image_008	100	300	1270	762	1:00	0
Image_009	100	300	1270	762	1:00	0
Image_010	100	300	1270	762	1:00	0
Image_011	100	300	1270	762	1:00	0
Image_012	100	300	1270	762	1:00	0
Image_013	100	300	1270	762	1:00	0
Image_014	100	300	1270	762	1:00	0
Image_015	100	300	1270	762	1:00	0
Image_016	100	300	1270	762	1:00	0
Image_017	100	300	1270	762	1:00	0
Image_018	100	300	1270	762	1:00	0
Image_019	100	300	1270	762	1:00	0
Image_020	100	300	1270	762	1:00	0

Create Your Own Archive

- Processed files settings are saved
- After screen imaging, layouts go to designated folder for archiving or deletion
- Create your own file archive for easy retrieval through the search function

SAATI LTS 8012

Alternative LTS Models



LTS Series Direct Laser CtS

- 405nm lasers that quickly and thoroughly cure all emulsion & film types, even high EOM dualcure in under 3 minutes
- Image & Expose screens simultaneously with five DPI options: 2,540 - 1,690 - 1,270 - 1016 - 847
- Easy to use software compatible with many RIPs
- Compatible with 110 or 220V power



SAATI LTS 6080

- Facedown glass panel with enclosing lid and safe viewing window
- 96 laser array
- Digitally register, image & expose several small screens simultaneously
- Total image area of up to 24" x 31.5"
- Comes with pneumatic clamp registration system, also adaptable to other systems
- Can be rolled easily into place with heavy duty casters and fits through standard doorways
- Overall Dimensions: 56" x 28" x 36"
- Weight: 882 lbs.

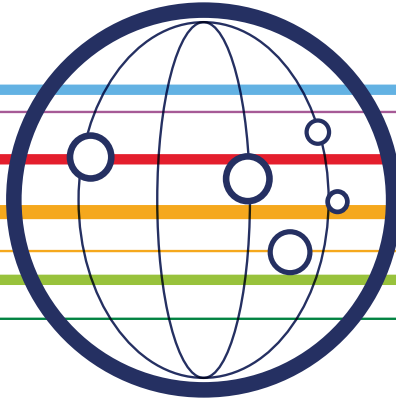


SAATI LTS 1015

- Vertical glass free design with safety shutter
- 160 laser array
- Larger format model than LTS 6080-VF - image & expose two 25x36" screens together
- Total image area of up to 39" x 57"
- Larger custom sizes available upon inquiry
- Standard Dimensions: 101" x 33.25" x 81"
- Standard Weight: 3,307 lbs.



We cross-innovate

**SAATI S.p.a**

Via Milano, 14
22070 Appiano Gentile (Co), Italy
Tel : +39 0319711
Fax: +39 031 933392
E-mail: info.it@saati.com

SAATI Americas Corp.

201 Fairview St. Extension
Fountain Inn, SC 29644
Toll-Free: +1 800 431 2200
Fax: +1 864 862 0089
E-mail: info.us@saati.com

SAATI Technical Fabrics (Tianjin) Co., Ltd.

Cross Of Saida 2nd Branch Road and Saida Century Avenue,
Xiqing Economic Development Area,
Tianjin, China 300385
Tel: +86 22 23960843
Fax: +86 22 23962116
E-mail: info.cn@saati.com

SAATI Deutschland GmbH

Ostring 22 46348 Raesfeld, Germany
Phone: +49 2865 95800
Fax: +49 2865 958010
E-mail: info.de@saati.com

SAATI Korea Ltd.

22, Dangjeong-ro, Gunpo-si Gyeonggi-do, 435-833, Korea
Phone: +82 31 429 9337
Fax: +82 31 429 9338

SAATI France

74 Route de Bapaume 80360 Sailly Saillisel, France
Phone: +33 3 22 85 77 00
Fax: +33 3 22 85 77 00
E-mail: info.fr@saati.com

SAATI Serigrafía Ibérica, S.a.

Pol. Ind. El Mijares, C/ Industria, nº 13 12550
Almazora, Castellón, Spain
Phone: +34 964550688
Fax: +34 964551049
E-mail: info.es@saati.com

SAATI Russia

23 Shvetsova str. 198095 Saint-Petersburg, Russia
Phone: +79 062788343

Website

www.SAATI.com

—SAATI
We cross-innovate